

Modern - Wall-mounted bathtub set

Codice kit: 4701 GVP-120

Traditional wall-mounted bathtub set – 2 exits

Componenti



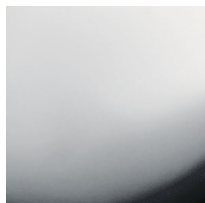
Tap set with spout

Cod: 4701E401A00

Wall mtd bathtub set

Finiture disponibili:

finiture speciali su richiesta salvo quantitativi minimi di ordine garantiti



chrome

CRCR



phosphorus nichel

NFNF



black

3131



white

1010