



Modern - Gruppo doccia incasso

Codice kit: 3305 UDI-150

Gruppo doccia incasso termostatico con soffione tubolare verticale girevole con Flyfall



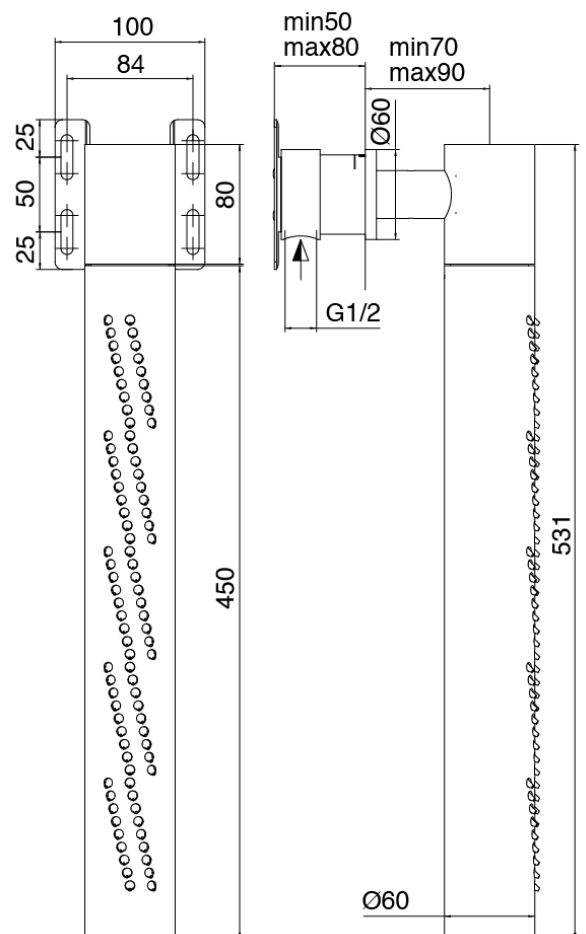
Componenti



Soffione tubolare con Flyfall

Cod: 3300SO03A00

Soffione tubolare girevole verticale a parete con Flyfall

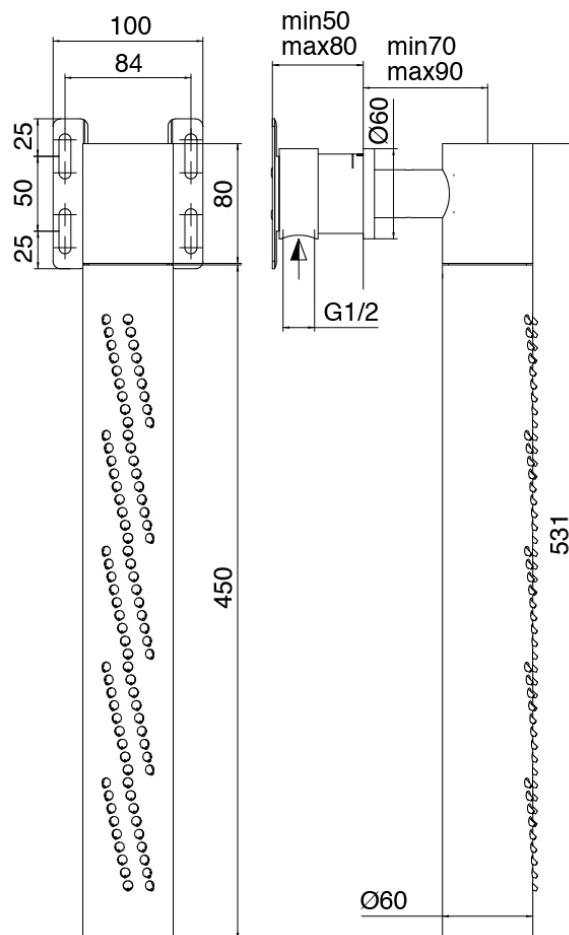




Parte grezza

Cod: 3300B120A00

Soffione tubolare vert/orizz a parete - Parte grezza

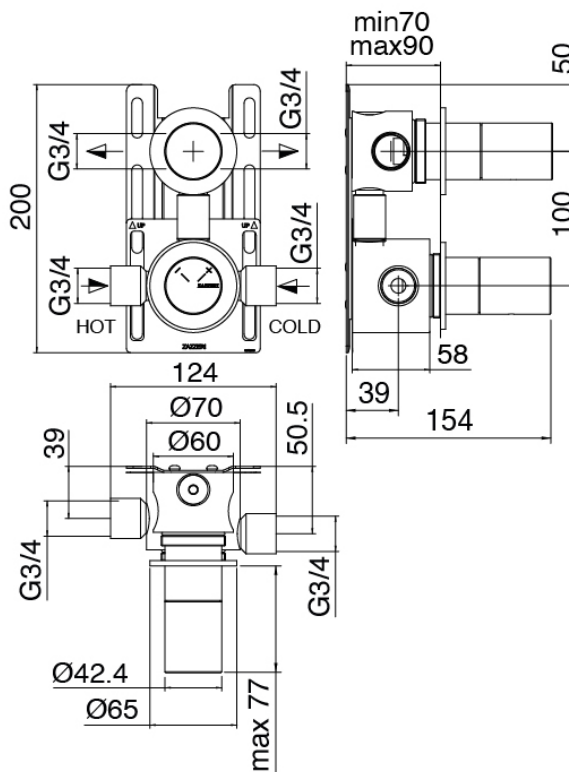


Parte grezza

Cod: 33000801A00

Gruppo termostatico da incasso CONFORT a 1 uscita

(1 rubinetto) - Parti grezze

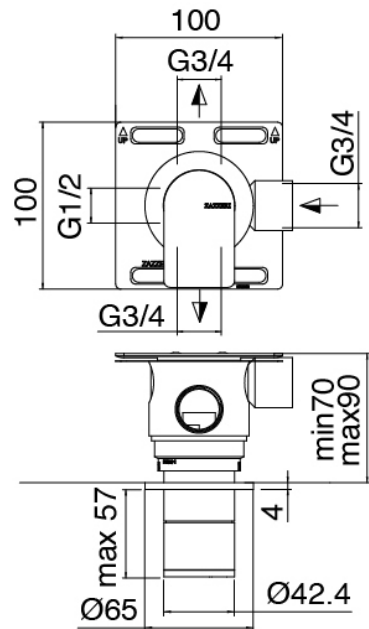




Rubinetto di linea

Cod: 3305Y407AA0

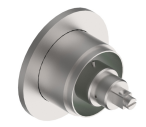
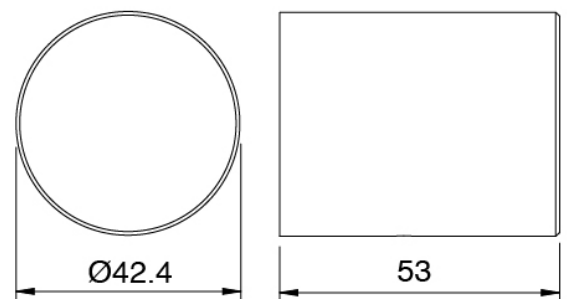
Rubinetto di linea - parti esterne



Manetta

Cod: 3305MA05A00

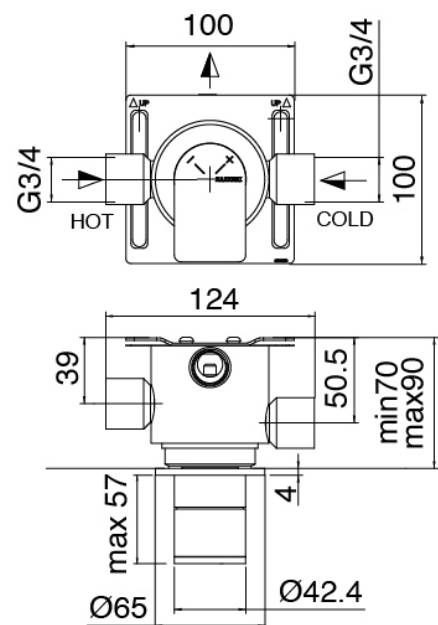
HANDLE MA05 Manetta deviatore a 2 e 3 vie con stop/3 vie senza stop/rubinetto di linea



Comando termostatico

Cod: 3305T550AA0

Comando termostatico da incasso - parti esterne

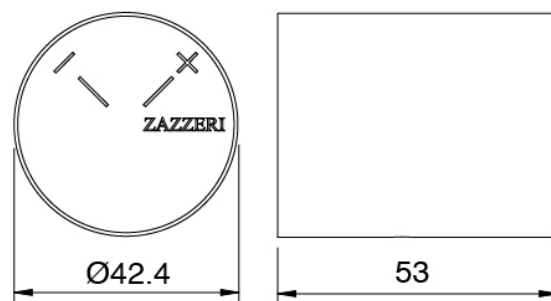




Manetta

Cod: 3305MA06A00

HANDLE MA06 Manetta comando termostatico



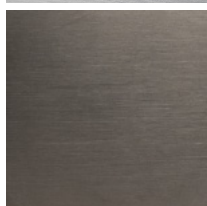
Finiture disponibili:

finiture speciali su richiesta salvo quantitativi minimi di ordine garantiti



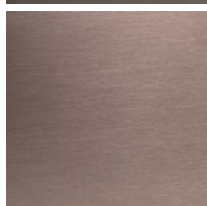
acciaio spazzolato

ASAS



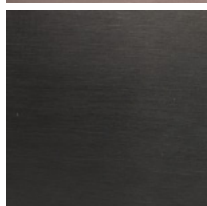
antracite

APAP



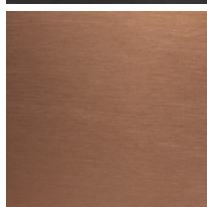
bronzorame

BPBP



carbon

KPKP



rame

RPRP



cognac

CPCP



orobianco

GPGP