



Modern - Shower arm with shower head and hand shower

Codice kit: 5700 DDI-110

Shower arm with shower head, hand shower and built-in thermostic mixer – 2 exits

Componenti



Thermostatic control

Cod: 3500T401AA0

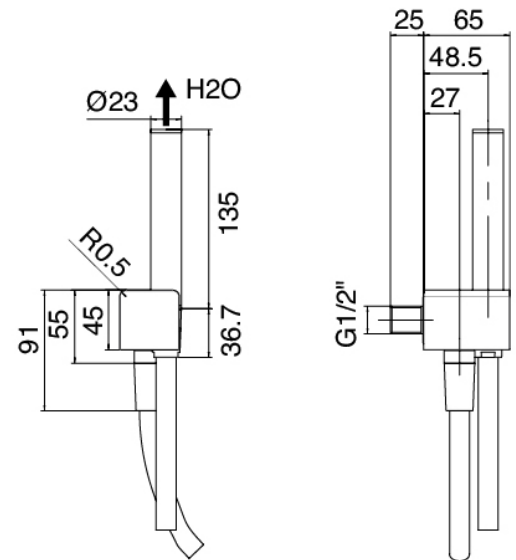
Cancealed thermostatic mixer - Two way - External part



Stand alone hand shower

Cod: 5700Q419A00

Handshower set, with POP handshower with water outlet and support



Untreated finish part

Cod: 2900T401A00

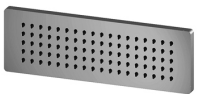
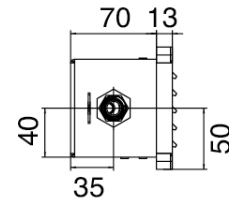
Concealed thermostatic mixer - Two way -rough parts



Rectangular box

Cod: 5700SO02AB0

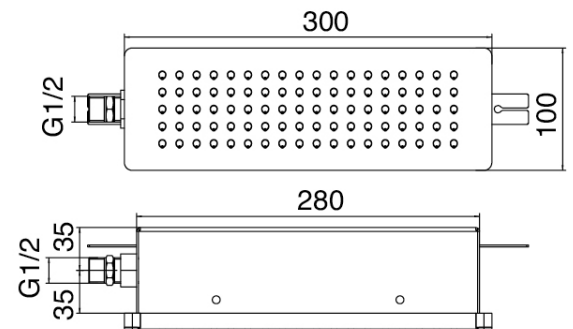
Built -in box horizontal showerhead



Rectangular shower head Waterfall

Cod: 5700SO02AA0

Horizontal wall-mounted showerhead 100X300mm with Flyfall



Finiture disponibili:

finiture speciali su richiesta salvo quantitativi minimi di ordine garantiti



cromo

CRCR



acciaio spazzolato

ASAS