



Modern - Shower arm with shower head and hand shower

Codice kit: 2100 DDI-090

Shower arm with shower head, hand shower and built-in mixer – 2 exits

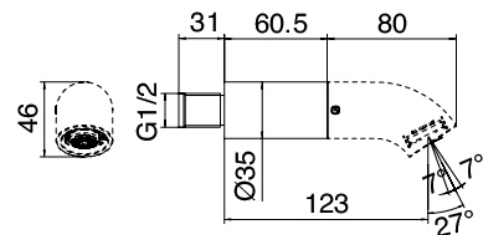
Componenti



Wall-mounted arm

Cod: 2100BR01A00

Spout for washbasin/shower 60 mm - without spout





Stand alone hand shower

Cod: 21000414A00

Handshower set with water outlet



Pop spout

Cod: 2100CL08A00

Spout for shower-Brass



Single-lever mixer

Cod: 2100A401A00

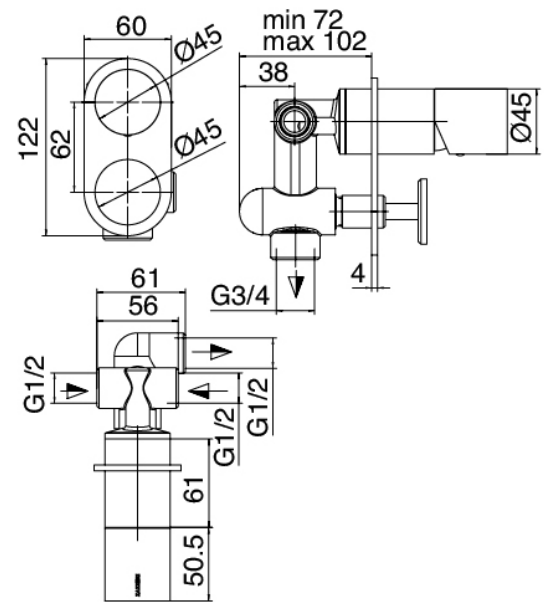
Concealed shower mixer with diverter - external part



Untreated finish part

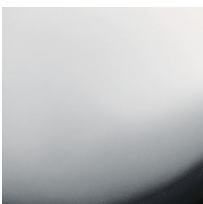
Cod: 2100B401A00

Concealed shower mixer with diverter - concealed part



Finiture disponibili:

finiture speciali su richiesta salvo quantitativi minimi di ordine garantiti



cromo

CRCR



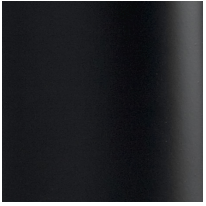
acciaio spazzolato

ASAS



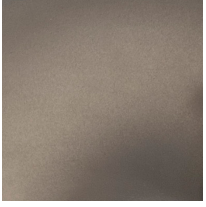
bianco

1010



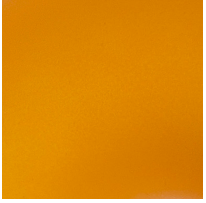
nero

3131



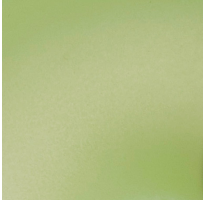
nero fumo

3232



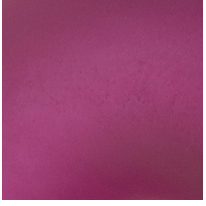
arancio albicocca

4242



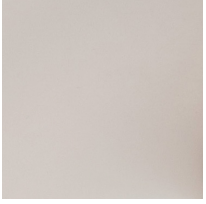
verde mela

5252



viola mirtillo

6262



bianco latte

7272



blu luna

8282